

### CUTTING STYLES



**Cushion   Oval   Triangle   Pear   Round**

### GEMMOLOGICAL SPECIFICATIONS

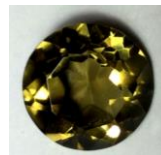
|                           |                    |
|---------------------------|--------------------|
| <b>Mineral</b>            | Quartz             |
| <b>Chem. Composition:</b> | SiO <sub>2</sub>   |
| <b>Specific Gravity</b>   | 2.66               |
| <b>Hardness</b>           | 7                  |
| <b>Refractive Index</b>   | 1.544 – 1.553      |
| <b>Birefringence</b>      | 0.009              |
| <b>Fluorescence</b>       | Inert              |
| <b>Pleochroism</b>        | Weak               |
| <b>Optic character</b>    | Uni-axial positive |

This certificate is the opinion of the grader at the specific time of inspection. It is not an evaluation. The customer shall have no claim against the grader, its principal, distributor or retailer for any inaccuracies or errors contained herein. Most gemstones are heated to improve their colour.

GRADER   Dr P Prins Ph.D (geochemistry) MBA Stellenbosch  
Mrs Riana Courtis. Graduate Gemmologist (GIA)

Date.....signature.....

## SMOKY QUARTZ



the item graded

## GEMMOLOGICAL GRADING REPORT

**No. XQTZ 139**

### PRINS & PRINS GEMSTONE LABORATORY



Huguenot House, 66 Loop St. Cape Town RSA

www.prinsandprins.com

**Member of the S.A Jewellery Council**

### GRADING REPORT

**Identification..... Smoky Quartz .....**  
**Origin ..... NAMIBIA .....**  
**Weight..... 4.11 ct .....**  
**Dimensions ... 11.08 x 11.03 – 6.07 mm .....**  
**Shape ..... ROUND .....**  
**Colour Hue ..... Greenish Brown.....**  
**Tone ..... Medium .....**  
**Saturation ..... Medium .....**  
**Clarity ..... Eye Clean .....**  
**Cut ..... VERY GOOD .....**  
**Brilliance ..... 80 % .....**  
**FINAL GRADE ... PREMIER PLUS.....**

### EXPLANATION OF REPORT

**WEIGHT**                      1 carat = 200mg = 100 points

#### COLOUR – has three components:

**1.Hue:** Describes the colour the eye sees. eg. yellowish green.  
**2.Tone:** Indicates to the lightness or darkness of the colour..

|            |       |        |      |           |
|------------|-------|--------|------|-----------|
| Very light | Light | Medium | Dark | Very dark |
|------------|-------|--------|------|-----------|

**3.Saturation:** Indicates to the intensity and purity of the colour.

|      |        |        |       |
|------|--------|--------|-------|
| Poor | Medium | Strong | Vivid |
|------|--------|--------|-------|

**CLARITY** indicates the amount of internal and external blemishes visible with the trained naked eye

|           |                   |                     |                  |
|-----------|-------------------|---------------------|------------------|
| Eye clean | Slightly included | Moderately Included | Heavily Included |
|-----------|-------------------|---------------------|------------------|

**CUT** describes the quality of the stone's symmetry, its polish and proportions

|           |      |         |
|-----------|------|---------|
| Very good | Good | Average |
|-----------|------|---------|

**BRILLIANCE** the percentage of light reflected to the eye in the stone's face-up position

#### FINAL GRADE

|              |         |      |         |      |
|--------------|---------|------|---------|------|
| Premier plus | Premier | Good | Average | Poor |
|--------------|---------|------|---------|------|